

## Q&A on Pyrolysis Machine

### 1. Raw Material Can be Used



WASTE TYRE



OTR



BICYCLE/MOTORCYCLE TIRES



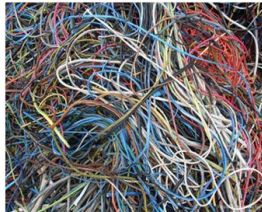
WASTE WOVEN BAGS



WASTE RUBBER



WASTE PLASTIC



WASTE CABLE SKIN



OIL SLUDGE



WASTE SOLE



WASTE ALUMINIUM-FOIL



PMMA SCRAPS



RESIDUAL/HEAVY OIL



WASTE PLASTIC COME FROM PAPER MILL



MSW



WASTE LEATHER



INDUSTRIAL PAINT SLUDGE



INDUSTRIAL WASTE





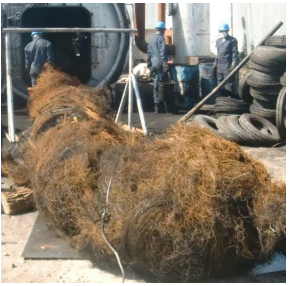
WASTE OIL FILTER ELEMENT

**Note: 1) Different Raw Material will require similar Pyrolysis machine, just some detail structure will be a little different, and the pyrolysis process different point will be guided and trained by our technician.**

**2) You also can send us some sample to our company for free testing on the Oil Yield, Pyrolysis Temperature, and other index...**



## 2. End Production Usage and Yield

No.	Name	Yield	Usage	Photo
1	Tyre Oil	45%	<ul style="list-style-type: none"> <li>☑ Sell directly.</li> <li>☑ Extract Diesel and Gasoline by Oil Distillation Machine.</li> <li>☑ Used as heating fuel for Industry.</li> </ul>	
2	Carbon Black	35%	<ul style="list-style-type: none"> <li>☑ Sell directly.</li> <li>☑ Make Fine Carbon by Carbon Black Refining Machine.</li> <li>☑ Make Pellet by Carbon making pellet machine.</li> </ul>	
3	Waste Steel Wire	15%	<ul style="list-style-type: none"> <li>☑ Sell directly.</li> <li>☑ Make steel bloom by Hydraulic Press-Packing Machine</li> </ul>	
4	Syn gas	5%	<ul style="list-style-type: none"> <li>☑ Used as fuel via gas burn system(we supply gas burner for free)</li> <li>☑ Extra gas also can be collected as fuel for other heating.</li> </ul>	



### 3. Pyrolysis Model and Daily Capacity

No.	Model	Reactor Volume	Daily Capacity	Note
1	ZM-2200*6000	22.7 CBM	5ton/batch	3 batches/ 2 days
2	ZM-2200*6600	25 CBM	6ton/batch	3 batches/2 days
3	ZM-2600*6000	31.8 CBM	8ton/batch	1 batch/day
4	ZM-2600*6600	35 CBM	9ton/batch	1 batch/day
5	ZM-2800*6000	36.9 CBM	10ton/batch	1 batch/day
6	ZM-2800*6600	40.6 CBM	12ton/batch	1 batch/day
7	ZM-2800*8000	49.2 CBM	15ton/batch	1 batch/day

### 4. Heating Fuel

No.	Heating Fuel	Burner If need
1	Pyrolysis Oil(Tyre Oil)	Yes
2	Natural Gas	Yes
3	Wood, Coal, Carbon Pellet,etc...	No

### 5. Pyrolysis Processing Time

No.	Model	Auto Feeding Time	Pyrolysis Time	Cooling Time	Discharging time
1	ZM- 2200*6000	1 hour	7 hours	5 hours	40 mins
2	ZM- 2200*6600	1 hour	7 hours	5 hours	40 mins
3	ZM- 2600*6000	2 hours	8-9 hours	5 hours	50 mins
4	ZM- 2600*6600	2 hours	8-9 hours	5 hours	50 mins
5	ZM- 2800*6000	2 hours	10 hours	6 hours	1 hour
6	ZM-2800*6600	1 hour	10hours	4-6Hours	1 hour
7	ZM-2800*7500	1 hour	12hours	4-6hours	1.2 hours



## 6. Pyrolysis Machine Working Power

NO.	Model	Motor need	Total Working Power
1	ZM- 2200*6000	350 speed reducer 3KW, Draft fan 4KW, Blowers 1 KW, discharge slag machine 4 KW,	20.5 KW
2	ZM- 2200*6600	Take out steel wire machine 4KW Water pump 3 KW, oil pump 1.5KW.	
3	ZM- 2600*6000	400 speed reducer 3KW, Draft fan 7.5KW, Blowers 1 KW, discharge slag machine 4 KW, Take out steel wire machine 4KW Water pump 3 KW, oil pump 2.2KW.	27.2 KW
4	ZM- 2600*6600		
5	ZM- 2800*6000		
6	ZM- 2800*6600		
7	ZM- 2800*7500	500 speed reducer 3KW, Draft fan 7.5KW, Blowers 1 KW, discharge slag machine 4 KW, Take out steel wire machine 4KW Water pump 3 KW, oil pump 2.2KW.	27.2 KW
<p><b>Note: Above data only for customer rough reference, exactly data please contact with your consultant manager.</b></p>			

## 7. Pyrolysis Machine Installation

Once receive the deposit, we will send engineer to your site for foundation and factory construction site guidance,

Once machine arrive to customer site, our engineer will arrive to your site for guiding machine installation,debugging and training.

Regularly one machine will need 15~20 days for installation.



## 8. Pyrolysis Machine Covering Area

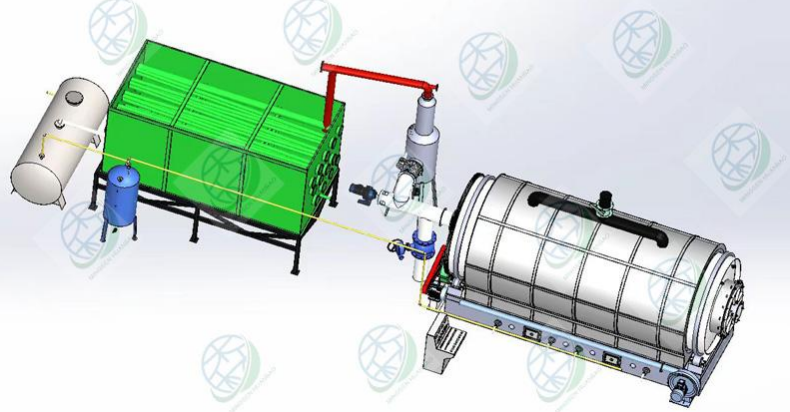
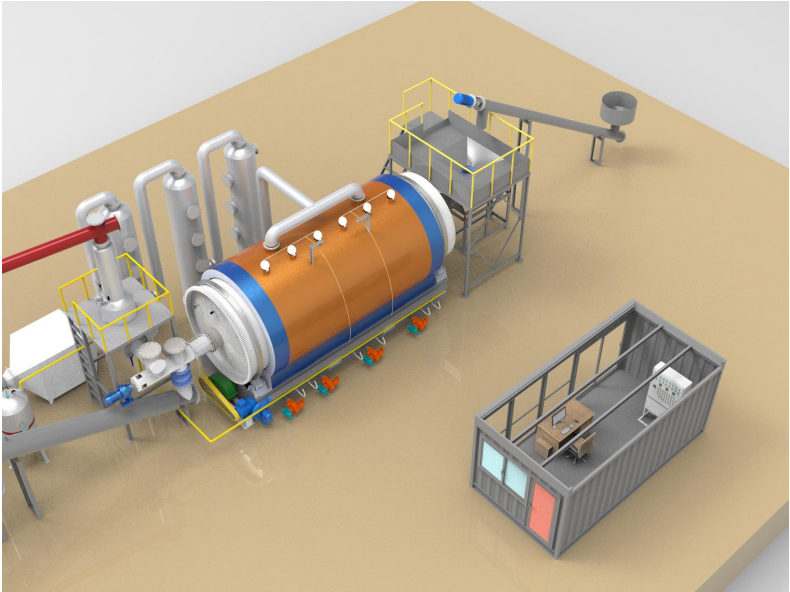
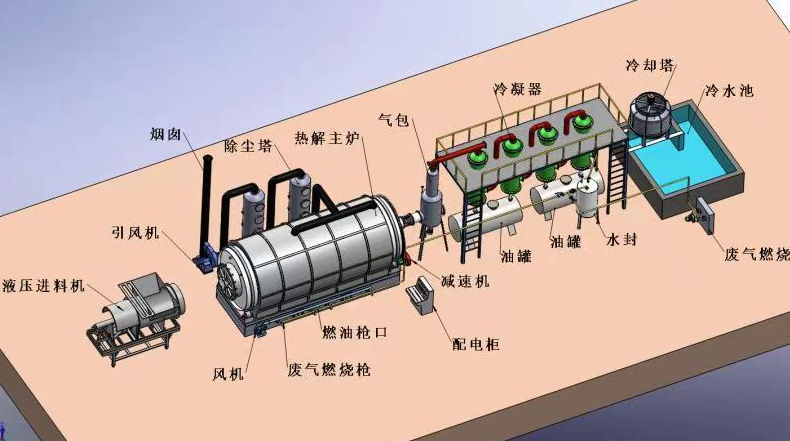
Machine Qty	Machine Cover Area	Warehouse Area	Totally Area
1 set	300 m <sup>2</sup> (L30m/W10m/H5-7m)	600 m <sup>2</sup>	900 m <sup>2</sup>
2 sets	600 m <sup>2</sup> (L30m/W20m/H5-7m)	900 m <sup>2</sup>	1500 m <sup>2</sup>
3 sets	900 m <sup>2</sup> (L30m/W30m/H5-7m)	1100 m <sup>2</sup>	2000 m <sup>2</sup>
4 sets	1200 m <sup>2</sup> (L40m/W30m/H5-7m)	1800 m <sup>2</sup>	3000 m <sup>2</sup>
5 sets	1500 m <sup>2</sup> (L50m/W30m/H5-7m)	2500 m <sup>2</sup>	4000 m <sup>2</sup>
6 sets	1800 m <sup>2</sup> (L60m/W30m/H5-7m)	3200 m <sup>2</sup>	5000 m <sup>2</sup>

Note: Above data for your initial reference, finally construction data please contact with our consultant manager.

## 9. Operator Qty Required

No.	Machine Qty	Total Operator Qty
1	1 set	2-3
2	2 sets	3
3	3 sets	4-5
4	4 sets	5-6
5	5 sets	6-7
6	6 sets	7-8

### 10. Pyrolysis Machine Configurations

No.	Cooling Name	Photo
1	Tube Coil Cooling Design	
2	Semi-Continuous Design	
3	Condenser cooling	

Cost difference according different cooling method and characteristics, further detail info please contact us.



## **11. Safety Precaution and Eco-Friendly**

Each set machine will be inspected by MINGSEN professional inspectors before delivering out, cover X-ray testing, pressure testing, auto-calibration testing, if customer need, we will provide the test report for customer file.

Devices adopted anti-blocking system, Pressure meter, Alarm system, Safety Valve, Negative pressure device. Working under normal pressure.

Potential risk of the machine mainly come from the C1 and C4 which can not be liquefied, if directly burning will be dangerous. So before burning, we first adopted 2 layer Water sealing system, second through back-fire relief valve, finally burnt by Gas burner, totally 3 safe devices to guarantee machine safety.

In addition, devices has been installed with Pressure Meters, Auto-alarm system, Temperature Meters. Once pressure in reactor out of standard, can auto decompression and auto alarm.

Whole set machine running process is fully sealed, no smell no smoke. Environmental protection devices are perfect. Equipped with specialized waste recycle devices and flue dust remove system. We have auto-discharge system, carbon black discharge machine reduce labour intensity. Reasonable design, advanced manufacture technology, high degree automatic, perfect safety devices, small cover area, no waste water, no waste slag, no waste gas, all of the output are fully recycled. So no pollution for environment.